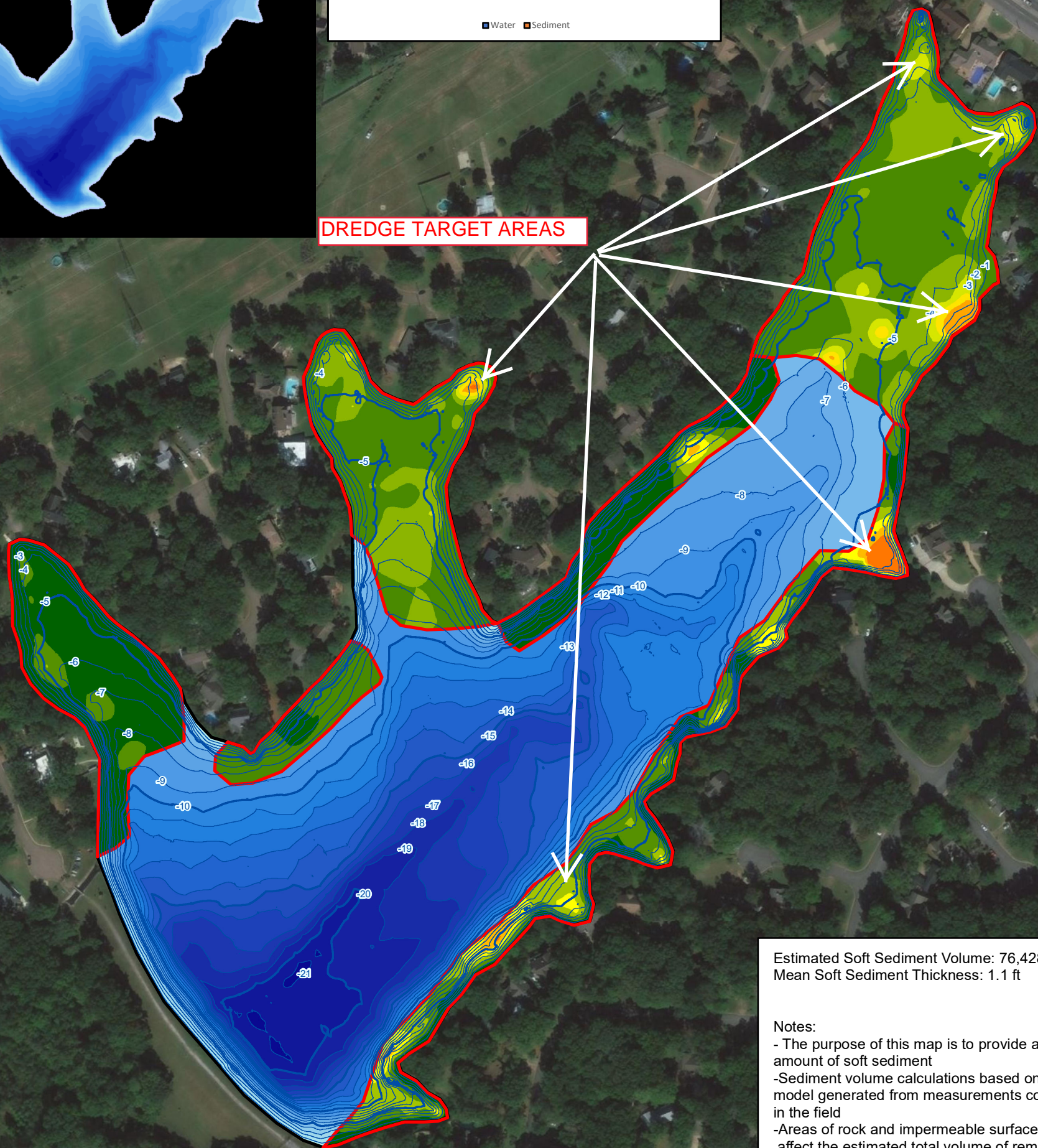
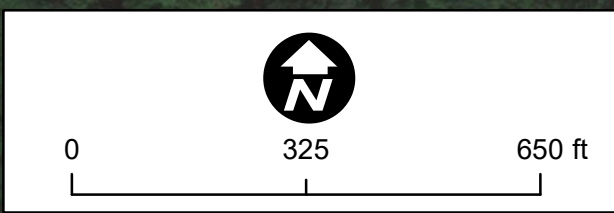


DREDGE TARGET AREAS



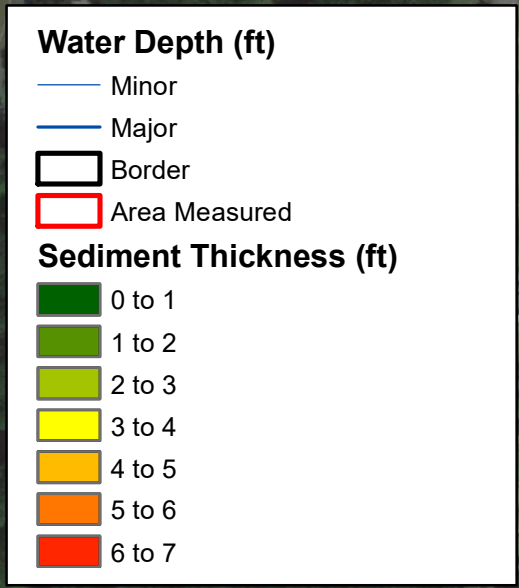
Estimated Soft Sediment Volume: 76,428.5 yards³
 Mean Soft Sediment Thickness: 1.1 ft

Notes:
 - The purpose of this map is to provide an estimated amount of soft sediment
 -Sediment volume calculations based on computer model generated from measurements collected in the field
 -Areas of rock and impermeable surfaces may affect the estimated total volume of removable sediment.
 -Shrinkage not included in calculations



Lake Information:
 Area: 43 Acres
 Max Depth: -21.3 ft
 Mean Depth: -9.2 ft
 Volume: 128,315,999 gal / 394 ac-ft

Mapping Information:
 Data Collection Performed: 9-15-20
 GPS: Mapping Grade (sub-foot accuracy)
 Points Collected: 247,527
 Water Level: 3.42 ft lower than Concrete Pillar



Walnut Grove



Copyright © 2020 The Mapping Network. All rights reserved. Reasonable efforts have been to verify that this map accurately interprets the source data used in its preparation; however, a degree of error is inherent in all maps, and this map may contain omissions and errors in scale, resolution, rectification, positional accuracy, development methodology, interpretation of source data, and other circumstances. Solitude Lake Management or The Mapping Network MAKES NO WARRANTIES OF ANY KIND, EITHER EXPRESS OR IMPLIED, INCLUDING THE WARRANTIES OF MERCHANTABILITY AND FITNESS FOR A PARTICULAR PURPOSE. The Mapping Network SHALL NOT BE LIABLE TO ANY PERSON UNDER ANY LEGAL OR EQUITABLE THEORY FOR DAMAGES ARISING OUT OF THE USE OF THIS MAP, INCLUDING, WITHOUT LIMITATION, FOR DIRECT, CONSEQUENTIAL OR INCIDENTAL DAMAGES. This map is date specific and is intended for use only at the published scale. Nothing in this map implies the right to use private property, which may lie within or be bounded by the waters shown on this map. Do not use this map for marine navigation, swimming, diving, or other related activities, as it does not depict all information necessary to perform these functions safely.